

**CREATED BY**

**Chanel Glover and Juliana  
"Jewels" Smith**

# Sasha & Condi

Suburban Militants



# SHOW CONCEPT



**Sasha and Condi is an animated and live action comedy show following a mockumentary structure similar to The Real World with intermittent confessionals. Each episode centers on different moments from Sasha and Condi's adolescence in the 90s, with animated flashbacks.**

# SHOW CROSS



insecure

HBO





# MEET THE CHARACTERS

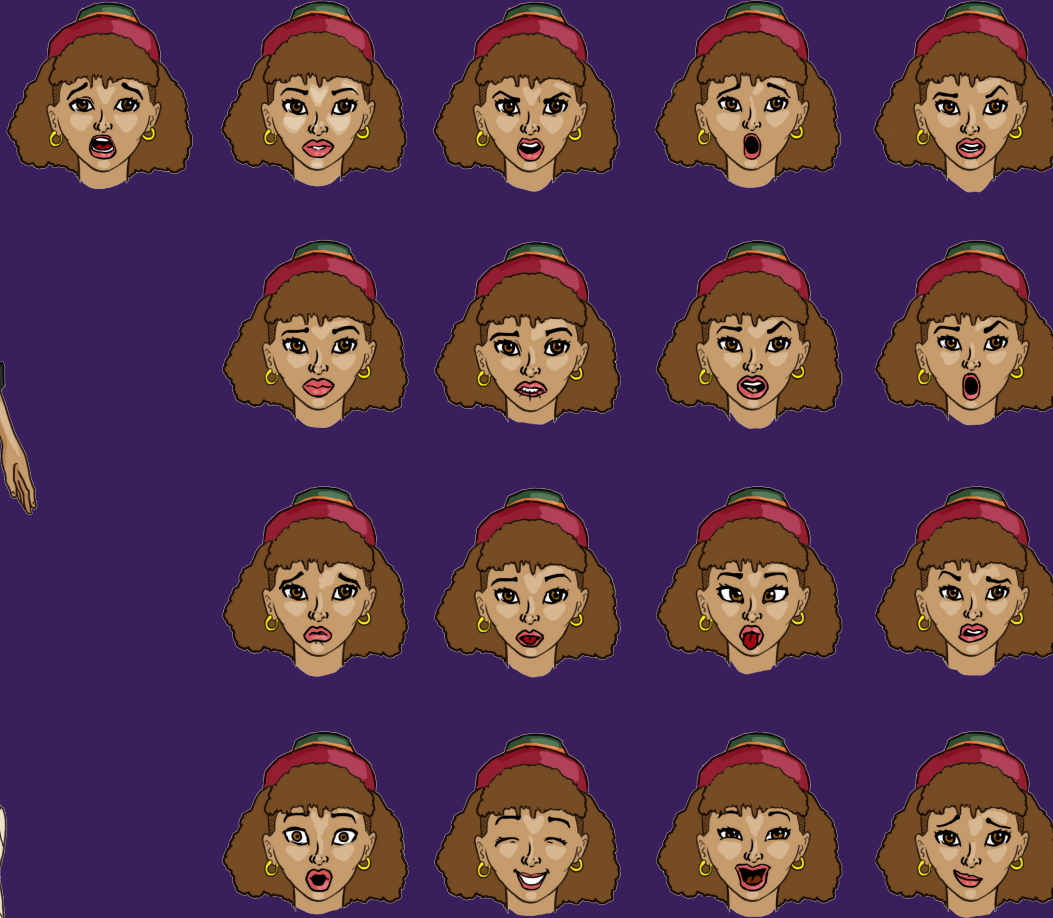
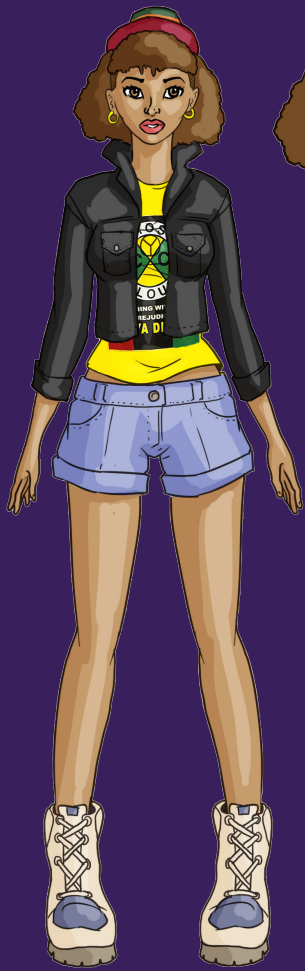


## Condi

**Condi is astute, sharp and clear headed. She remembers the moments of her childhood as if they were yesterday. That's why, when it comes to recalling the childhood and teen years of Condi and Sasha, you can find her being the rebuttal to Sasha's delusions of grandeur. She is the smart phone and gmail of the 90s, remembers how you used to write without commas and attention to grammar, archives your first love letter, and recorded high school sweetheart's break up over the phone. Most of all, Condi prides herself on telling it like it is, without attention to the impact it may have on "the whole black community...diaspora included" as Sasha says. Condi is pressed to provide clarity and insight.**



# MEET THE CHARACTERS



Condi

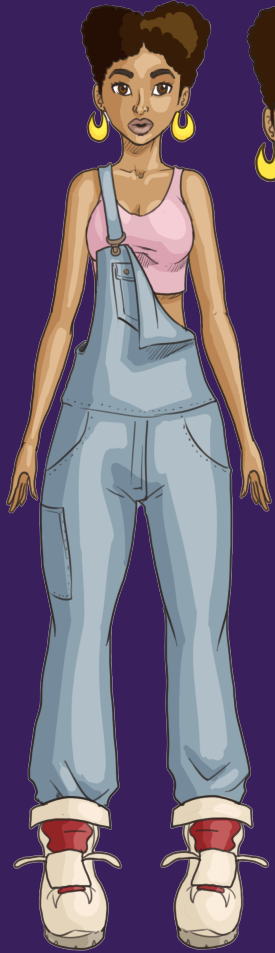
# MEET THE CHARACTERS



## Sasha

**"Groundbreaking. Unprecedented. Otherworldly." If Sasha could describe herself, those are the words she would use to explain her accolades and purpose in life. To say that Sasha thinks highly of herself would be remiss. The point is, Sasha thinks that anything she does is uplifting her people and "the entire black community...diaspora included." If you talk to Sasha on any given day she will tell you about how she single-handedly changed the course of history, as it pertains to the 90s.**

# MEET THE CHARACTERS



**Sasha**





## LOGLINE

**Sasha and Condi is an animated and live action comedy show centering on Sasha and Condi as they retell, but really reimagine their version of nostalgic moments in the 90s, and their harrowing days as the ONLY black spots in a sea of white suburbia.**

## SETTING

**Black teenagers from Pleasanton, a suburb outside of San Francisco, Sasha and Condi are best friends of convenience. Their town is mostly White, liberal families who are happy to have a few Black families, but not enough to lower the property value. While they both come from pro-Black families, their perspective on the 90s is world's apart. In Real World-like confessions, the audience watches them tell wildly different versions of the same moment; Sasha's pro-black delusions of grandeur or Condi's tendency to downplay everything. The two childhood friends agree on the importance of affirmative action and slap bracelets, but they can't seem to agree upon the best R&B group of the time or whether Magic Johnson putting his name on franchises is good for black folks.**

# EPISODE OVERVIEW



**The Key to the City:** The city's ice skating rink is the center of a metaphorical color line being broken after they become the first Black girl skaters (with no skates) on ice.

**EPISODE 1**



**Saving the WNBA:** After finding out that their math teacher is secretly a WNBA player, Sasha goes on a quest to right all the wrongs of the WNBA's pay scale and in the process ends up ruining the legacy of the Houston Comets.

**EPISODE 2**



**Buy Black:** Sasha and Condi win an award from their local chamber of commerce for their "Buy Black" campaign to snuff out the largest coffee shop in the city—Starbucks. Neither can agree if their Buy Black campaign meant Buy Black coffee or buy coffee made by Black folks.

**EPISODE 3**

# FUNDING REQUIRED

## ALLOCATION OF FUNDS



**\$500K**

### PRODUCTION

- Thumbnails
- Scripting & Dialogue
- Full 2D Character Animation(10K/min x 22 minute show)
- Storyboarding
- Background Arts & Building Character Parts
- Sound & Music



**\$250K**

### POST PRODUCTION

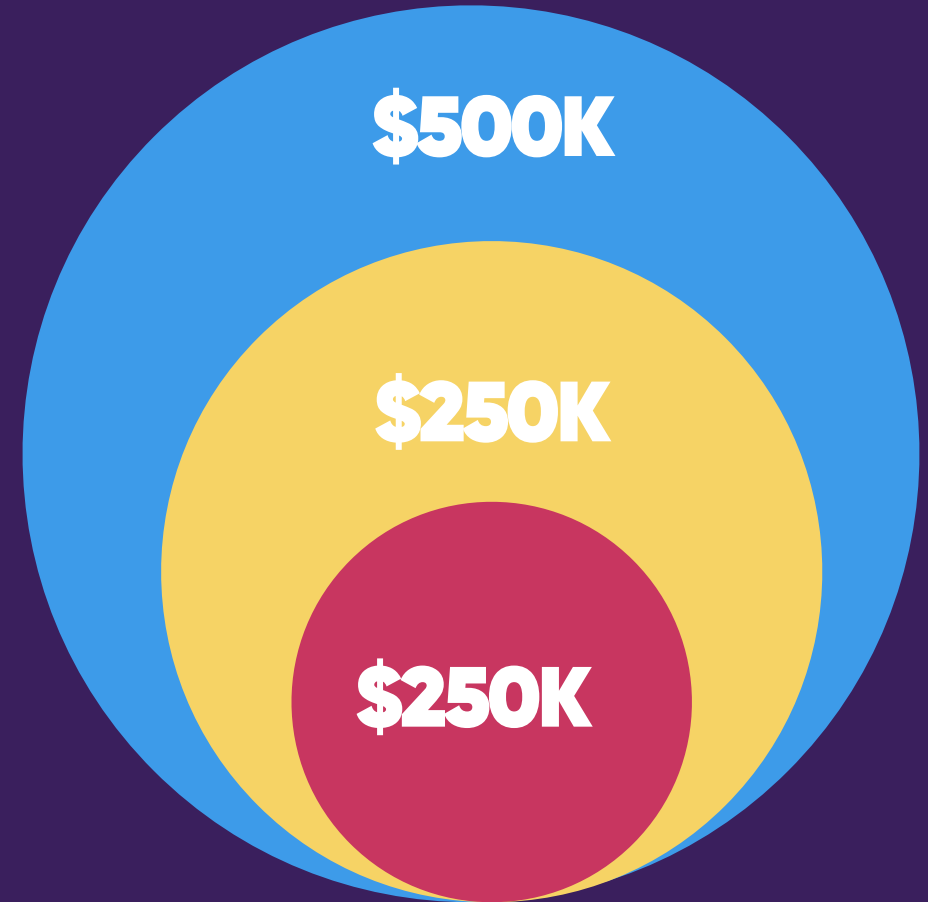
- Final Editing & Compression
- Voice Over Actors



**\$250K**

### SALES AND MARKETING

- Digital Marketing
- Events & Networking
- Film Festival Circuit
- Network Pitching





# OUR TEAM



**Chanel Glover**

**Writer & Co-Creator**

Chanel Glover is a trained lawyer, teacher and playwright with a knack for telling quirky stories about the experiences of queer people of color, mostly women, and sometimes young. She is the co-creator and writer of *Sasha and Condi*.



**chanel.glover@gmail.com**



**Juliana "Jewels" Smith**

**Writer & Co-Creator**

Juliana "Jewels" Smith is a teacher, author, and creator of the award winning series [\(H\)afrocentric](#). She is the co-creator and writer of *Sasha and Condi*.



**hafrocentric@gmail.com**



**Lu Stinnette**

**Creative Producer**

Lucretia Stinnette is a filmmaker with a multi-faceted international background. In addition to directing, Lucretia has produced content for brands such as Amazon, Mattel, Mountain Dew, Lipton, and [will.i.am and the Black Eyed Peas](#).



**lucretia.stinnette@gmail.com**

**GET IN  
TOUCH**



**HAFROCENTRIC.COM**



**HELLO@HAFROCENTRIC.COM**



**+ 1 510 992 3489**